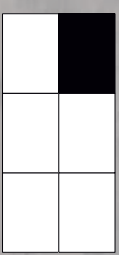
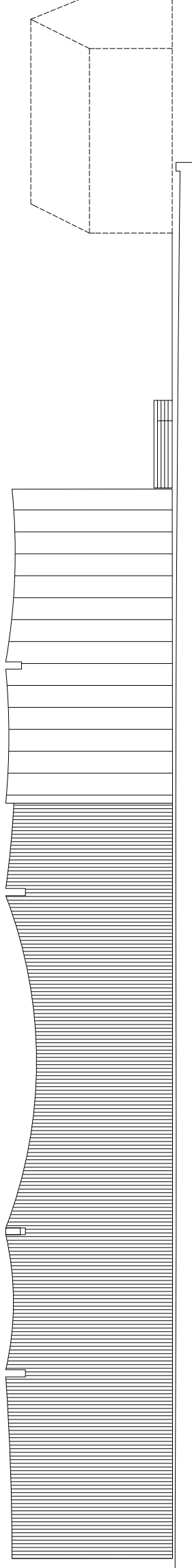






"Utsikt – innsikt – opplysnings"

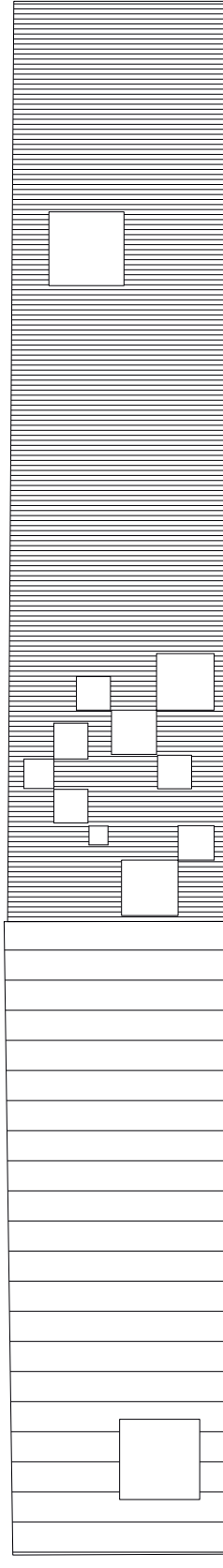




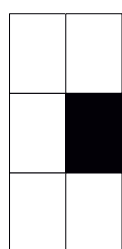
FASAD NORR I MÅLESTOKK 1:200

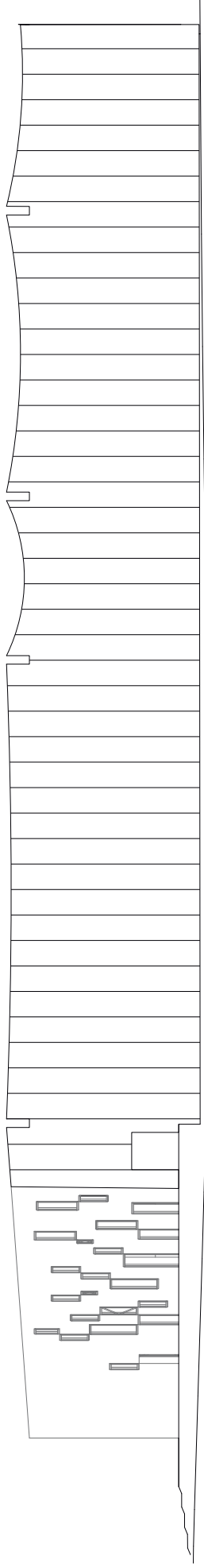


MØTESPLASS



FASAD ØST I MÅLESTOKK 1:200

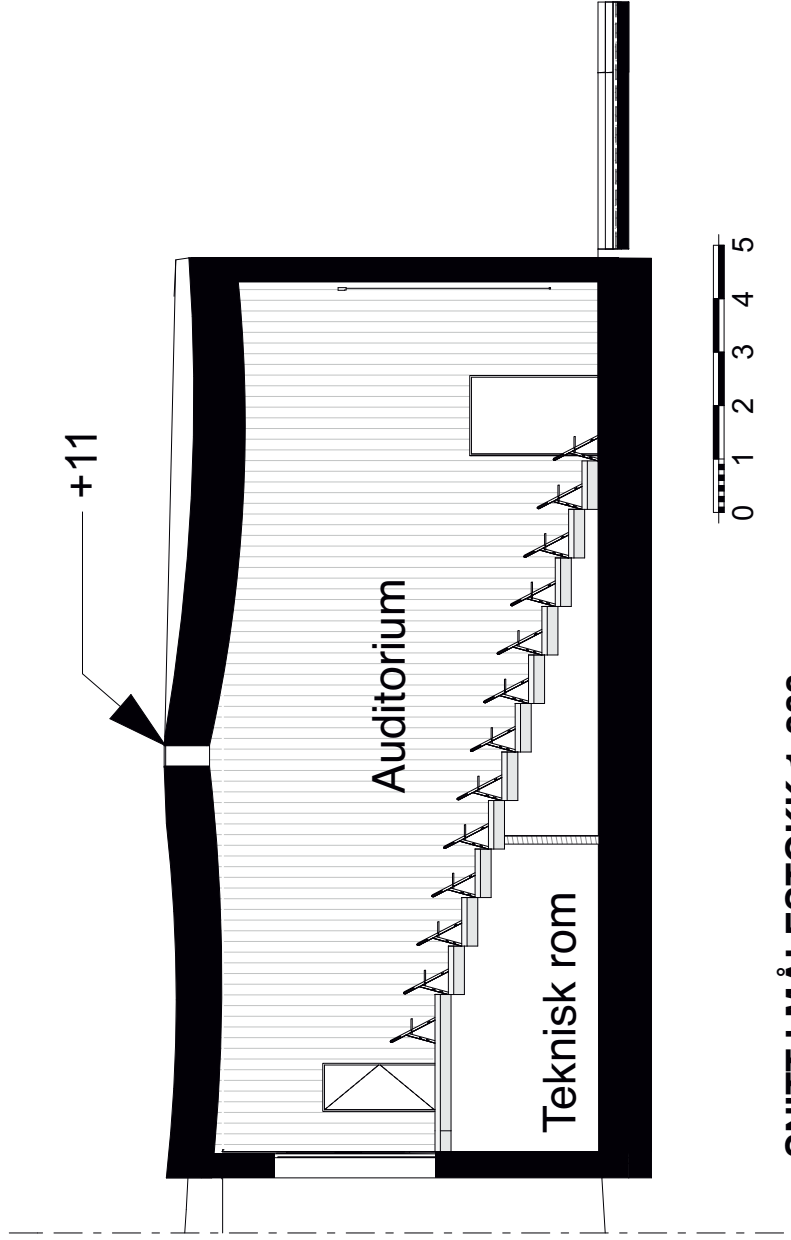




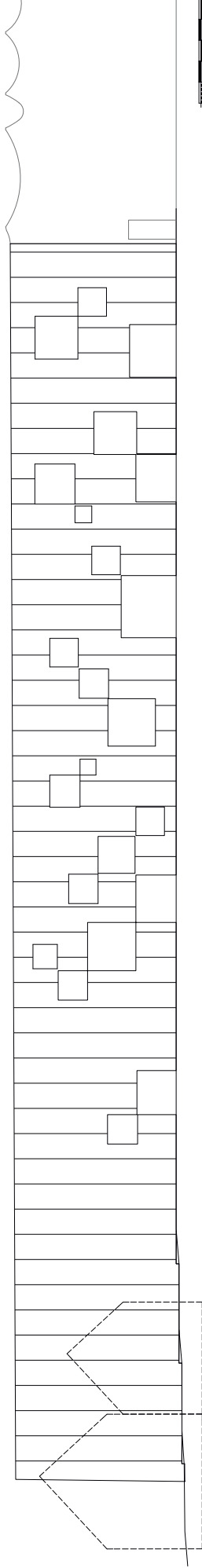
FASAD SØR I MÅLESTOKK 1:200



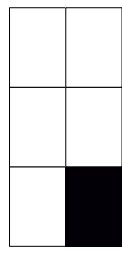
AUDITORIUM

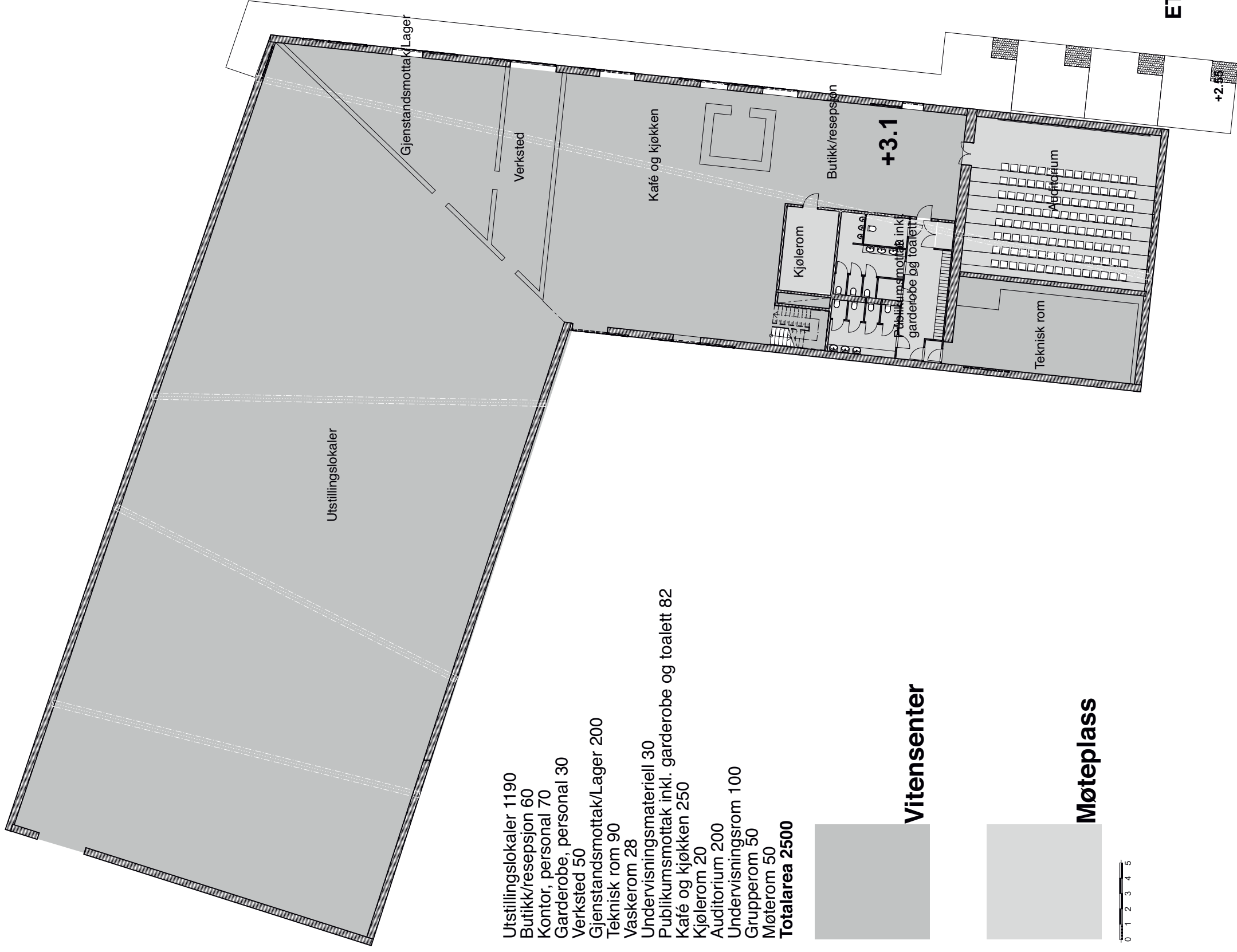


SNITT I MÅLESTOKK 1:200



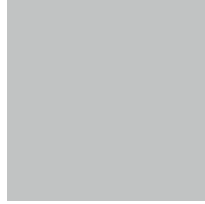
FASAD VEST I MÅLESTOKK 1:200



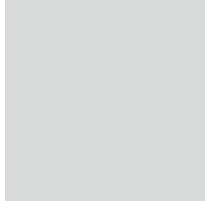


- Utstillingslokaler 1190
- Butikk/resepsjon 60
- Kontor, personal 70
- Garderobe, personal 30
- Verksted 50
- Gjenstandsmottak/Lager 200
- Teknisk rom 90
- Vaskerom 28
- Undervisningsmaterieell 30
- Publikumsrettet inkl. garderobe og toalett 82
- Kafé og kjøkken 250
- Kjølerom 20
- Auditorium 200
- Undervisningsrom 100
- Grupperom 50
- Møterom 50
- Totalarea 2500**

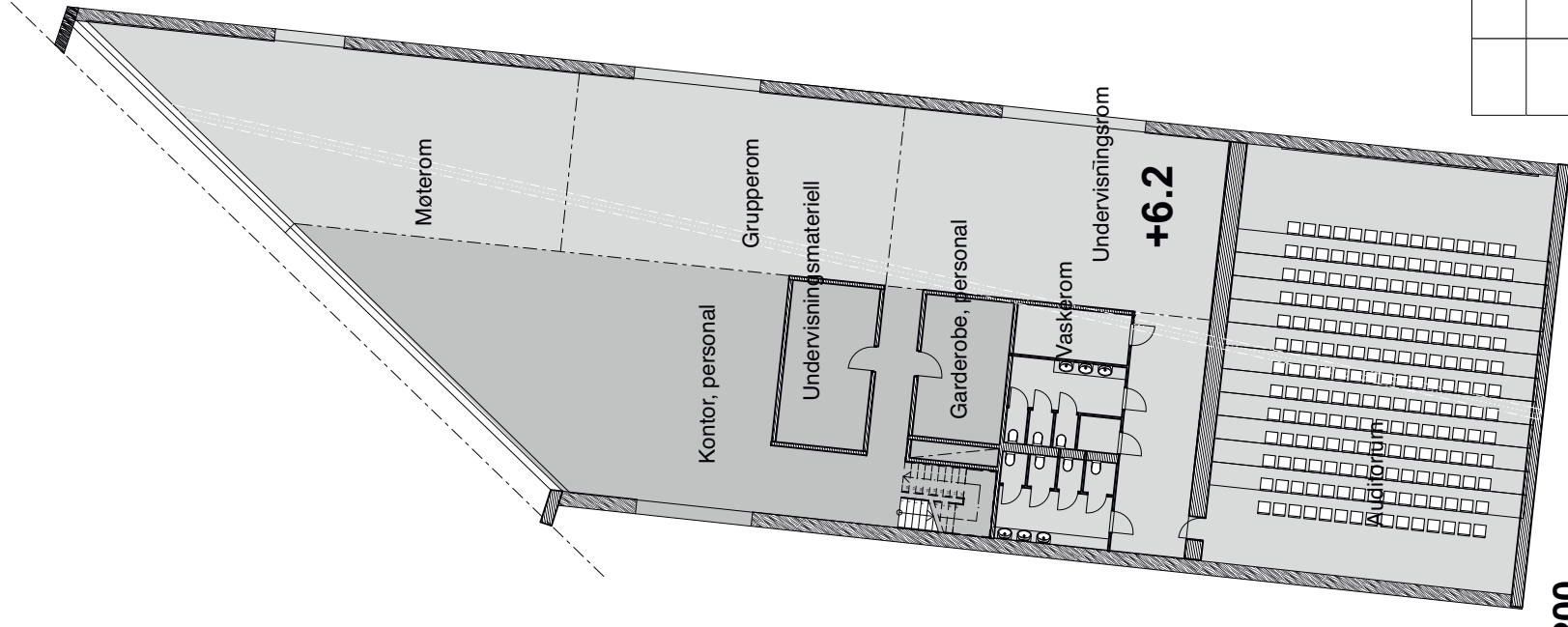
Vitensenter



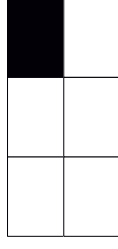
Møteplass



0 1 2 3 4 5

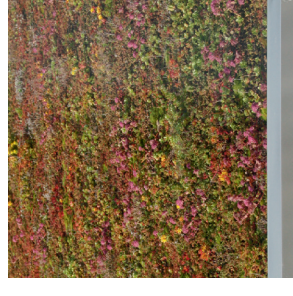


ETASJEPLANER I MÅLESTOKK 1:200



TERRENGSNITT I MÅLESTOKK 1:1000

A-A



Sedumtak



KL-tre i vegg 450mm og tak 800mm
Marmor i gulv på markisolert betong



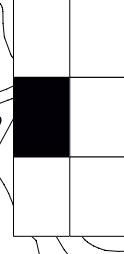
Børstet betong + Gressforsterkning på bakken



A

SITUASJONSPLAN I MÅLESTOKK 1:1000

A



Verdenshav